



HERON[®]

MS TWIN COLOR

A flex-core system in your hands!

All-in-one professional SLAM system to meet unlimited applications in the most demanding 3D surveying projects.



LIGHT SMART CONTROLLER

- Wired backpack and PDA wireless remote control via wi-fi connection.
- Lightweight (only 1085 g), compact, and detachable for flex configurations.
- Data storage on USB stick for privacy protection.
- Internal battery* + "Plug&Go" extra battery for non-stop acquisitions.

* If HERON is mounted on a support (such as a robot) equipped with its own power, the internal battery can be recharged while mapping directly.



4

RGB PANORAMIC CAMERA

4 lenses, 8K on a single shot,
4K on streaming.
Engineered by Gexcel.

3

DOUBLE LIDAR SENSOR

100/200 meters range.

PDA CONTROL UNIT

Wireless connection to the controller.
Wi-fi. User-friendly interface.
Advanced control points acquisition.
"Put in your pocket" option.

2

1

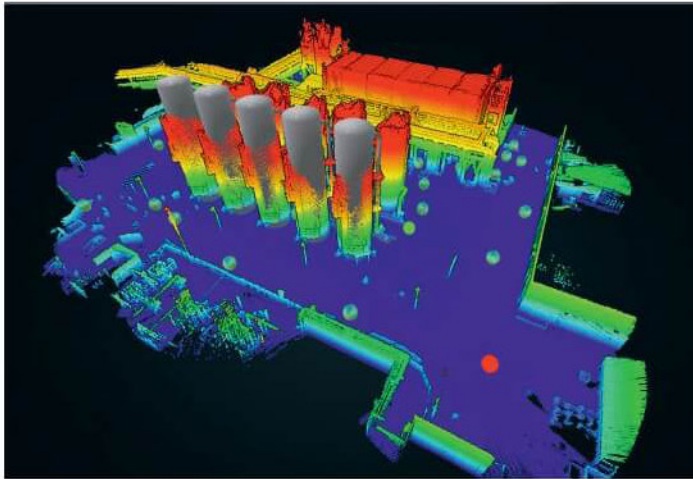


USABILITY

- **RGB** videos or 8K pictures on demand.
- Easy to use **without initialization** procedures.
- Optional use of **control points** or control scans **as constraints**.
- Patented algorithm: **free mapping path**. Loop closure not required.
- Wired rugged backpack both for acquisition and transport.
- Compact capture head dockable to **telescopic poles** to measure cavities and inaccessible areas.
- Measurements **by vehicles** (cars, bikes, quads, etc.).
- Rugged and powerful touch screen Control Unit.
- **Real-time visualization** of pictures and point cloud generated during the acquisition.
- Designed to work in **extreme environments**.
- Accessories for a very flexible user experience.

DATA PROCESSING

- **Accurate 3D models** also in complex environments.
- **Automatic color mapping**.
- Advanced mode for **full professional control** of the SLAM algorithm parameters.
- Point cloud editing software.
- Very dense point cloud rendering with multiple colour layers and **3D virtual tours**.
- **Direct export** of 3D data to **ReCap**, E57, LAS and the main formats of point clouds.
- Easy data export to **third-party software** (e.g. 3DM Feature Extraction, EdgeWise, Micromine, Scene, Verity).
- Sharing in E57 on **cloud platforms** (e.g. 3DM Cloud, 3DUserNet VISION, Cintoo Cloud, Scene Webshare).
- Advanced point cloud rendering which emphasizes **features and details**.
- Tracking mode for **real-time change detection** tasks.



APPLICATIONS

- Indoors / Outdoors Mapping
- Multi-floor Buildings
- Cadastral Survey
- Urban Areas
- Multi-sensor Projects
- Large, Complex, Harsh Environments
- Cultural Heritage
- BIM Models
- Tunnels
- Real Estate Assets Management
- Digital Twin / Immersive Tour
- Support to Design
- Plants and Elevations of Buildings
- Forests and Gardens
- Progress Monitoring in Construction Sites
- Forensic
- As-Built Digital Documentation
- Volumes Computations

INCLUDED SOFTWARE

What you need to create and navigate 3D models and share results



HERON® Desktop

Post-processing SLAM software

Software to extract 3D point cloud models from HERON measurements with: patented SLAM algorithm; time bar to organise processing as desired; filtering of moving objects. Advanced mode for total control of SLAM algorithm parameters. Use of scans and control points as constraints.



Reconstructor®

Advanced 3D point cloud analysis software

Professional software for advanced point cloud management and editing. Data processing from HERON or from terrestrial/mobile/UAV laser sensors. Powerful automatic and target-less scans alignment. Data export to ReCap, E57 and various standard formats. Full compatibility with various third-party software and cloud platforms. RGB camera calibration, HERON survey navigation, mesh and DTM generation, volume computation, sections and profiles.



GoBlueprint®

Blueprint map manager

Intuitive visualiser of scaled x-ray images (orthophotos of the cloud of 2.5D points), designed to easily extract measurements (volumes, distances, areas) even by non-3D specialist users. Compatible with any Windows tablet or PC. Free tool.



Gexcel Srl
Via Branze 45, I-25123 Brescia (Italy)
sales@gexcel.it | +39 030 6595001



Scan for Tech Sheet

HERON, Reconstructor, GoBlueprint are Gexcel trademarks. All rights reserved. Third-party software included in these pages are trademarks. All rights reserved to the companies that own the software. Gexcel is not affiliated with any of third-party software listed on these pages.

Local dealer contacts: